
ARCHLine.XP[®] 2015

News

Release 1

Information in this document is subject to change without notice and does not represent a commitment on the part of CadLine. The software, which includes the information contained in any databases, described in this document is furnished under a license agreement or nondisclosure agreement. The software may be used or copied only in accordance with the terms of the agreement. It is against the law to copy the software on any medium except as specifically allowed in the license or nondisclosure agreement. The licensee (purchaser) may make one copy of the software for the purpose of creating a backup copy. No part of this manual may be reproduced, transmitted, transcribed, or translated into any language in any form or by any means, without the express written permission of CadLine.

2015. CadLine. All rights reserved.

In no event shall CadLine be liable for special, indirect or consequential damages in connection with or arising from the use of this document or any programs contained herein.

Microsoft, MS, and MS-DOS are registered trademarks and *Windows* is a trademark of *Microsoft Corporation*.

ARCHLine.XP® is a trademark of CadLine.

This manual was produced using *Microsoft Word* and *ARCHLine.XP*®.

Contents

1.	Interface evolution	4
1.1.	New Toolbox style.....	4
1.1.1.	Favourites.....	4
1.2.	A new look for Showroom	5
2.	New tools.....	6
2.1.	Plain and Suspended Ceiling.....	6
2.2.	Google Maps integration.....	6
2.3.	Virtual Home staging with real 3D room	7
2.4.	Project information	8
2.5.	New developments in electric accessories.....	8
2.6.	New developments in space and zone management.....	9
2.7.	Exporting to gbXML	10
2.8.	New tool: 3D shape.....	11
2.9.	AutoSave speed up.....	11
2.10.	New 3D visualization mode: Transparent surfaces	11
3.	Others improvements	12
3.1.	Multiple visible floor plan structure	12
3.2.	Smart distance between openings.	12
3.3.	New option for door lining and architrave.....	12
3.4.	New schemas in Door/Window wizard,.....	12
3.5.	Connected height for wall slab, column, beam	13
3.6.	Import drawing from another project.....	13
3.7.	New KMZ import.....	13
3.8.	Updated SketchUp format.....	13

ARCHLine.XP 2015 is at the doorstep!

During the development of ARCHLine.XP 2015 the goal was to have an easy-to-use interface & workflow not only for the experienced users but beginners in computer design as well.

ARCHLine.XP 2015 comes with an integrated interface joining the two Architectural and Interior user interface. The new DirectX11 graphic update provides a smoothing design experience in 3D. Directx11 exploits the latest in video hardware features.

Brand new tools like Google Maps integration, Professional tool for Ceiling design, Switches and sockets catalogues with customization, new look for Showroom, etc.

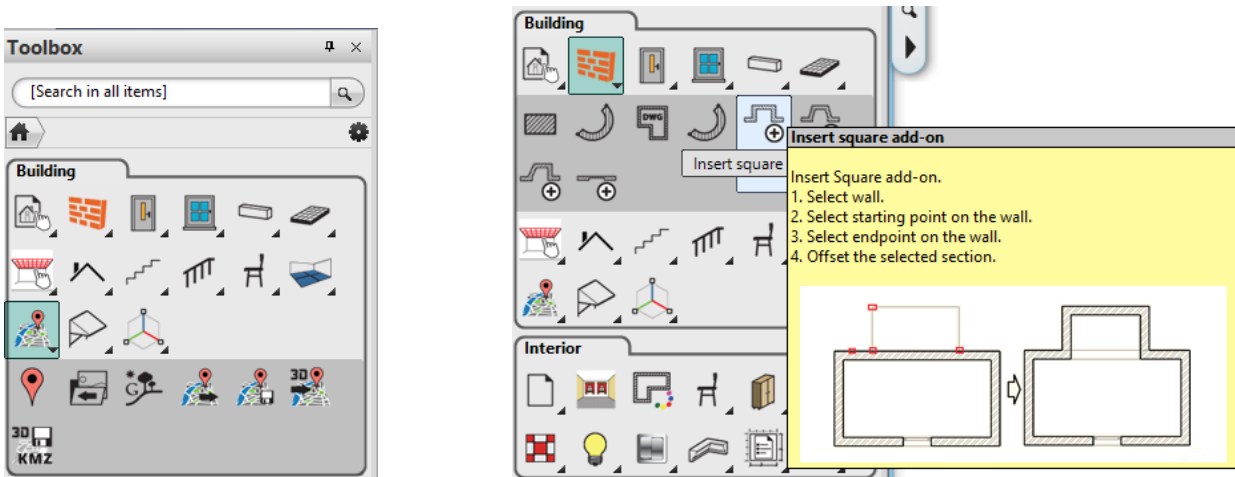
The new developments expedite daily work, and help to understand the handling of unused tools. The release is coming with the new features listed below

1. Interface evolution

1.1. New Toolbox style

The Toolbox look and feel has got a modern look adapting the Design Centre outlook. Advantages:

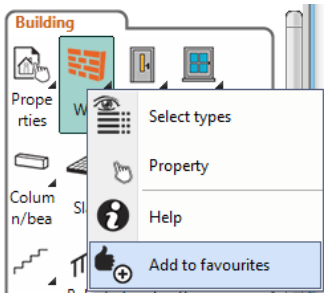
- ❖ The submenu displays within the main menu and remains open after the command selection. It requires less click to start the next command.
- ❖ The order of command groups are changeable.
- ❖ Search field to browse commands by name.
- ❖ New Favourites menu.
- ❖ New menu for user defined command groups.
- ❖ Mouse right click menu.
- ❖ Listing or icon style representation.
- ❖ New graphical tooltip to make it easier to understand the commands.



1.1.1. Favourites

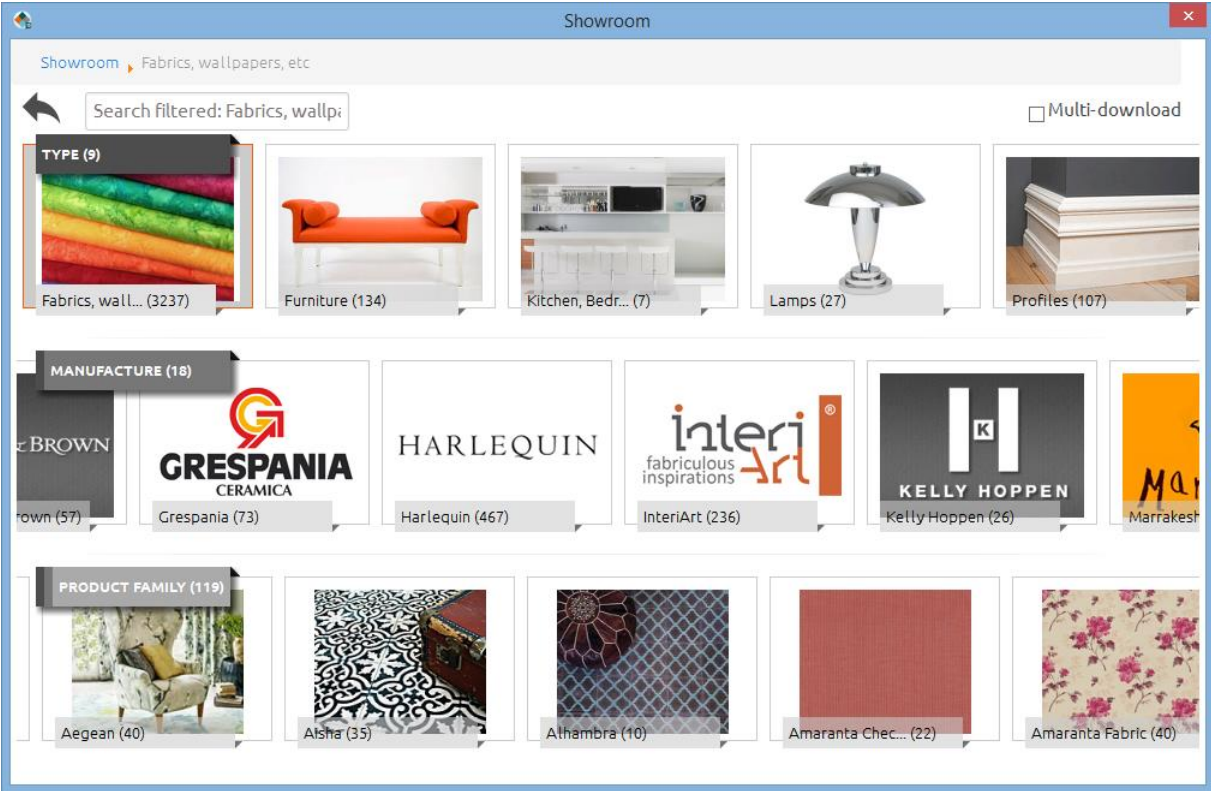
The Favorites list offers quick way to access frequently used commands. You can build more favourite lists for the most frequently used commands.

Use the right click on any Toolbox Items and select the Add to favourites command from its pop-up menu. Item is automatically added to the appropriate Favorites group on the Toolbox.



1.2. A new look for Showroom

You'll also find a completely rebuilt Showroom, the online repository containing high-quality fabrics, 3D models from leading product manufacturers and retailers. The new Viewer displays and enables to select on one webpage the whole collection of Product types, Manufacturers and Product families.



2. New tools

2.1. Plain and Suspended Ceiling

Parametric ceiling design tool in ARCHLine.XP let you quickly place ceiling grids using specific ceiling grid panels and other properties.



The suspended ceilings create a space that is used to house equipment and building services.

Ceiling Plan includes:

- ❖ Panels
- ❖ Main runner, Cross runner and Perimeter wall angle
- ❖ Diffusers for supply and extract air
- ❖ Ceiling lights
- ❖ Fire protection unit
- ❖ Other components as CCTV, Emergency Lighting, Exit Signs, etc

Ceiling is a host elements. It means the ceiling is able to host components into its structure. You can create a ceiling three ways:

- ❖ in Sketch mode drawing out the boundary of the ceiling,
- ❖ with clicking in a room, and
- ❖ automatically in all rooms in one step.

Ceiling is displayed with boundary lines, along the ceiling perimeter. Ceilings have two main types:

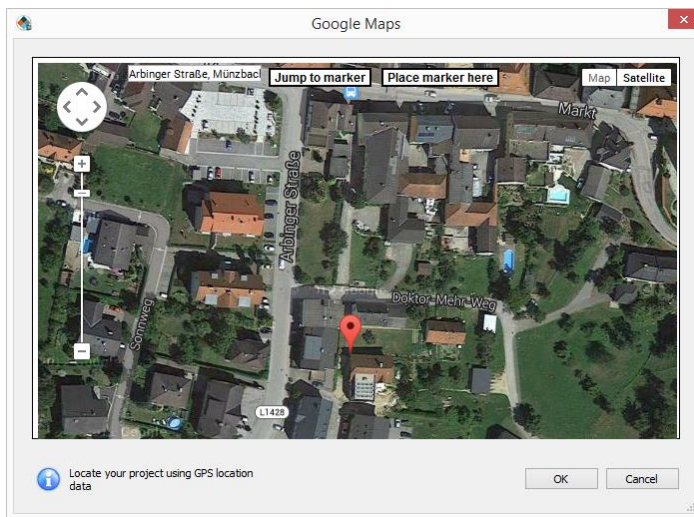
- ❖ Plain ceilings (such as plasterboard) and
- ❖ Grid ceilings (such as a suspended grid system).

The parametric ceiling editor allows you to parametrically control the Ceiling object, set the grid, along with additional ceiling accessories like ventilator diffusers, lights and fire-safety objects.

2.2. Google Maps integration

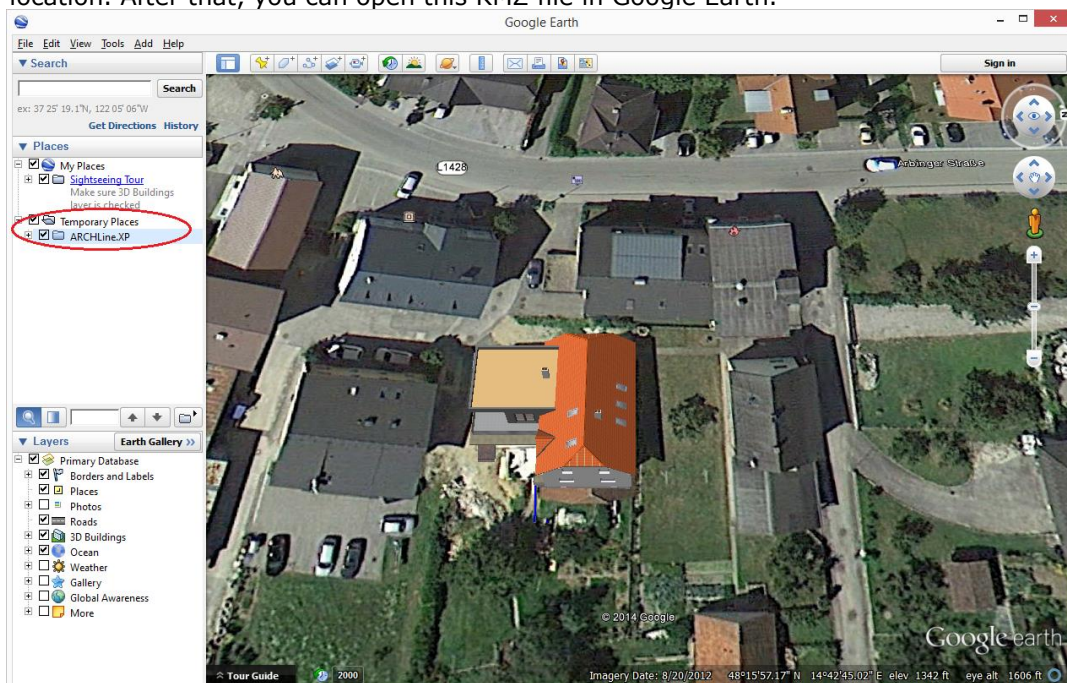
Project location by Google Maps

You can locate your project exactly on the planet using Latitude and Longitude or GPS coordinates. The project location is represented by a place mark on the Google Maps. The GPS coordinates are automatically saved into the ARCHLine.XP project and viewable each time you start Google Maps. This command requires internet connection.



Save the imagery overlay or 3D model as a KMZ file

You can save the 2D view overlay as a KMZ file to your computer's hard drive or other accessible file location. After that, you can open this KMZ file in Google Earth.



2.3. Virtual Home staging with real 3D room

Virtual staged 3D virtual room is a great tool to impress your clients.

Transform the property photo into a beautiful virtual staged home so it looks its best and everyone will want.

How does it work?

1. Open a room photo file.
2. Set-up the corner points along the vertical and horizontal edges on the room photo.
3. Assign the measurements and let the software convert it into real 3D room.
4. Clean the room surface images to remove unwanted furniture or lamps.
5. Drag it and drop the new furniture, fabrics, light, and other decorative elements in the floor plan or directly in the 3D window.
6. Change wall colors, floor or try to add a rug.
7. Create a rendering image.
8. Publish it for your clients.



2.4. Project information

ARCHLine.XP provides new option for project customization, including standard and user defined Project information parameters. The standard parameters are the following:

Issue Date
Status
Project Name
Author
Project Number
Client Name
Project Address
Postal Code
Project Location
Building Type
Project Phase

Beside the standard parameters you can add any number of new project related information parameters. Project information parameters are linked to Project Layout Stamp and fills the appropriate fields automatically.

Parameters	Value
Begin Date	12.02.2015
End Date	31.05.2015
Status	Façade Refurbishment
Project Name	11-27 Sanders Close
Author	John Smith
Project Number	155/2015
Client Name	Herbert Simon
Project Address	...
Postal Code	
Project Location	52.512255000000003,-2.0811119995 ...
Building Type	Multi family ...
Project Phase	Existing
Building(s), Storeys	...
Default zone	Zone 1
User parameters	
Controller	M. Konstantinou

Do not show this dialog again

Add OK Cancel

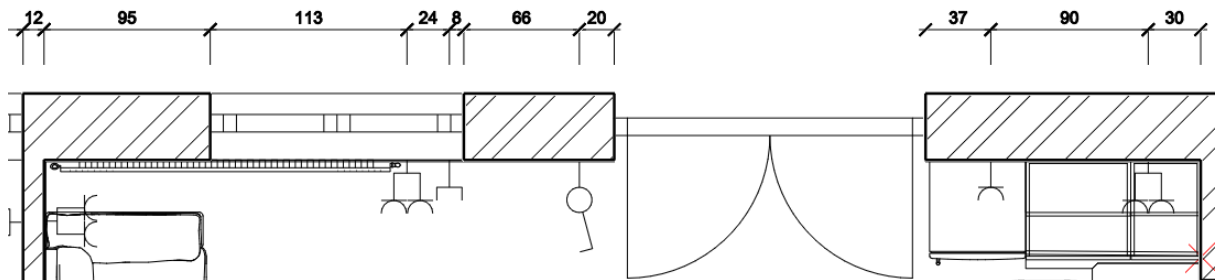
2.5. New developments in electric accessories

The electric accessories are reorganized and updated with new commands:

- ❖ Elements come from the library and accessible from the Design Centre
- ❖ Place on the drawing with Drag and drop method
- ❖ New switches and sockets Combination editor.
- ❖ Automatic placement on wall with left/right distances
- ❖ Wall dimension is extended with electric accessories.
- ❖ New elevation dimensioning for all switches and sockets on the floorplan.
- ❖ Switches and sockets report list in Excel.
- ❖ Lamps report list in Excel.

M-Elegance Real glass

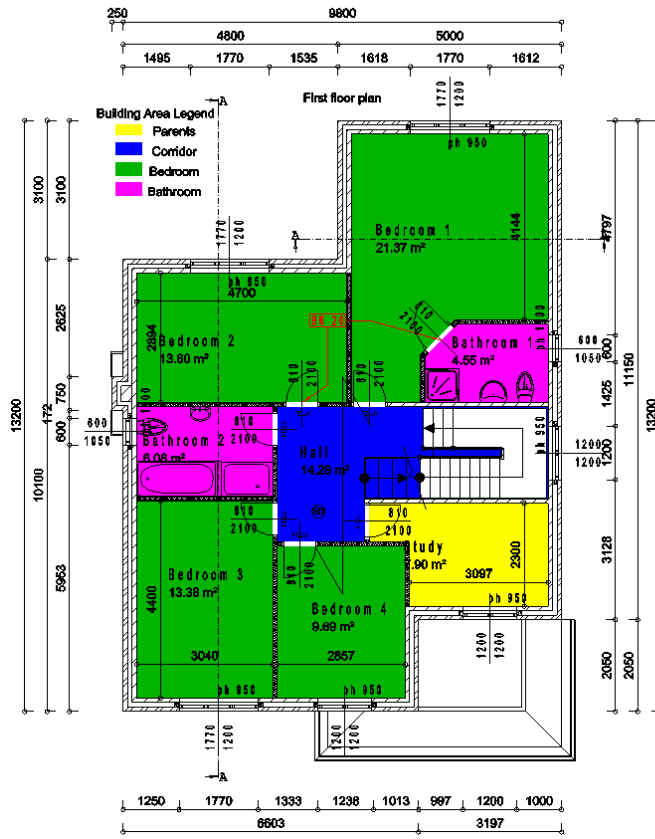
A high-quality, distinctive material – glass comes into its own in the M-Elegance frame version. The outer edges are cut like precious stone to emphasize the glass' elegant look and feel.



2.6. New developments in space and zone management

The space and zone management comes with new tags like Room type, command like IFC support, and easy management of large number of spaces together.

- ❖ IFC support extended with rooms
- ❖ New parameter: Room Type
- ❖ Colouring by Room type – Room Schedule
- ❖ Room legend by Room type
- ❖ New command: **Place rooms automatically**
- ❖ Enhanced command: **Room separation line (pseudo wall)**
- ❖ New room and area report in Excel file



Place rooms automatically

You can use the Place rooms automatically command to automatically create rooms for wall enclosed areas. This command helps to design complete room list, without manual placement inconsistencies. You can apply multiple selection to rooms and modify properties for more rooms together.

Room separation line (pseudo wall)

Room separation lines (pseudo walls) are to separate one room into many rooms. The new development divides the affected rooms automatically with the newly created Room separation line. Separation lines are visible in floor plan.

Colour scheme to rooms

You can apply a new colour scheme to rooms by Room type. Colours schemes are useful for visual representation of room categories. You can create a colour scheme by room area, type, or zones.

2.7. Exporting to gbXML

When you have placed spaces in all the rooms in the floor plan, you can export the 3D model as gbXML file to third-party for load analysis software applications to perform a load analysis.

An effective energy analysis can only be performed if the entire volume of the building is included in gbXML export data.

For this reason it is a must to completely fill the volume for all of the rooms in the building.

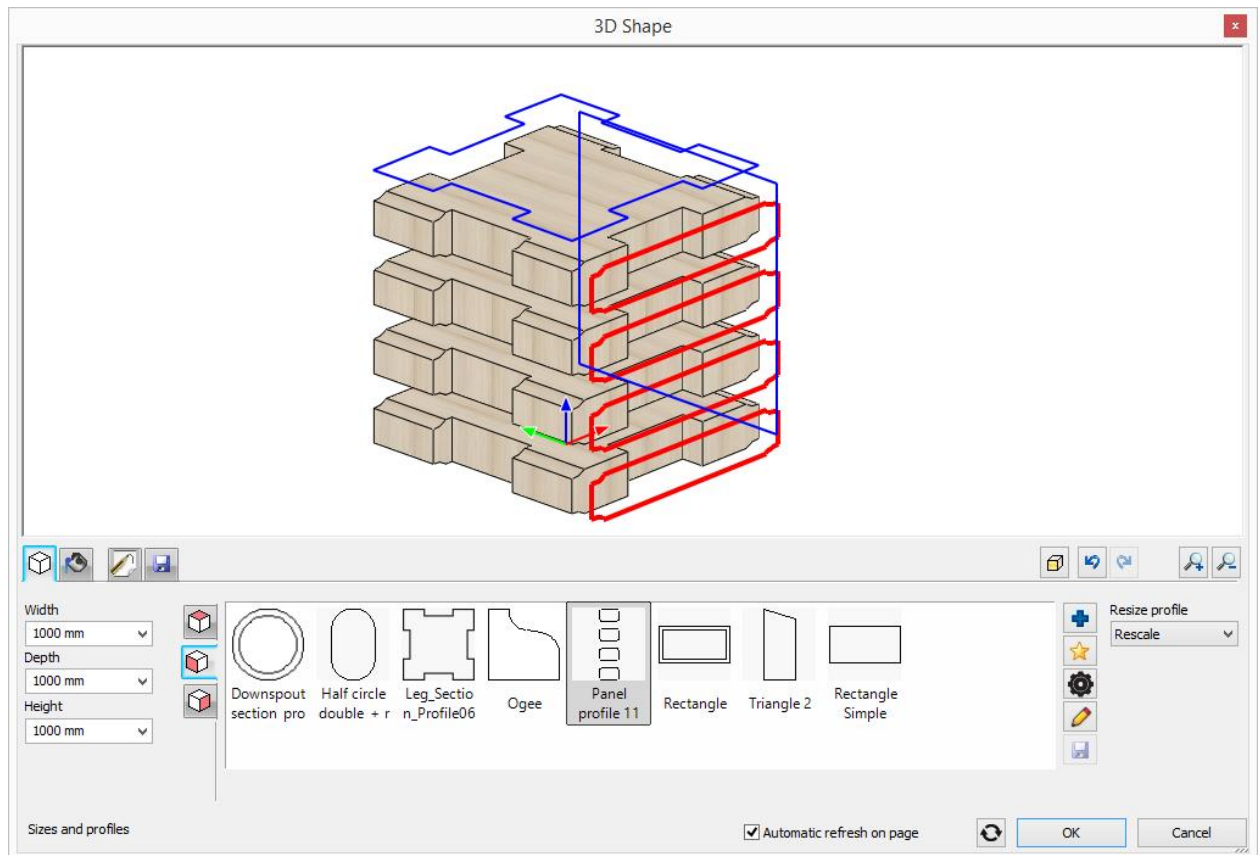
You can export the 3D model to gbXML in Export menu -> gbXML format

The software asks in a dialog to export Space or Zone volumes. Choose Zone if you wish to export volumes without gap between. Space means the volumes inside the rooms, and the wall thickness divides them as gap.

If any of the material assigned to exported elements comes without thermal parameters the warning dialog displays. There is not obligatory to assign thermal parameters to materials but strongly recommended.

2.8. New tool: 3D shape

The 3D shape command helps you to create 3D solids with 3 profiles projected from the 3 main direction (X, Y and Z).



2.9. AutoSave speed up

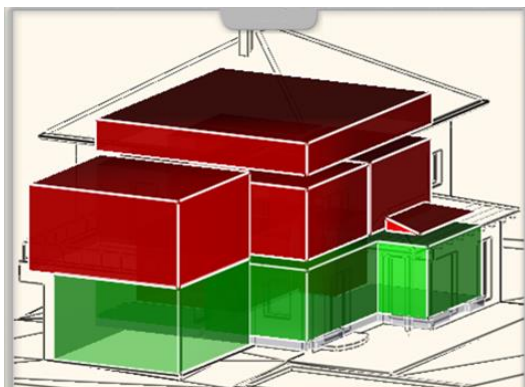
The **AutoSave** option can help you avoid losing work. The new multithread process reduces the AutoSave time for **fraction of a second**. If you enable this option, the floorplan of the project are recovered when the program is restarted after it closed abnormally.

2.10. New 3D visualization mode: Transparent surfaces

The Transparent surfaces is very useful when you want to **display internal volumes together with the entire model**. Available in Hidden Line visual mode, you can display what is behind the external surfaces of the building. When you work in a room you can visualize what is behind the furniture, such as electrical accessories or pipes.

The transparent surface effect can be set on a category or element.

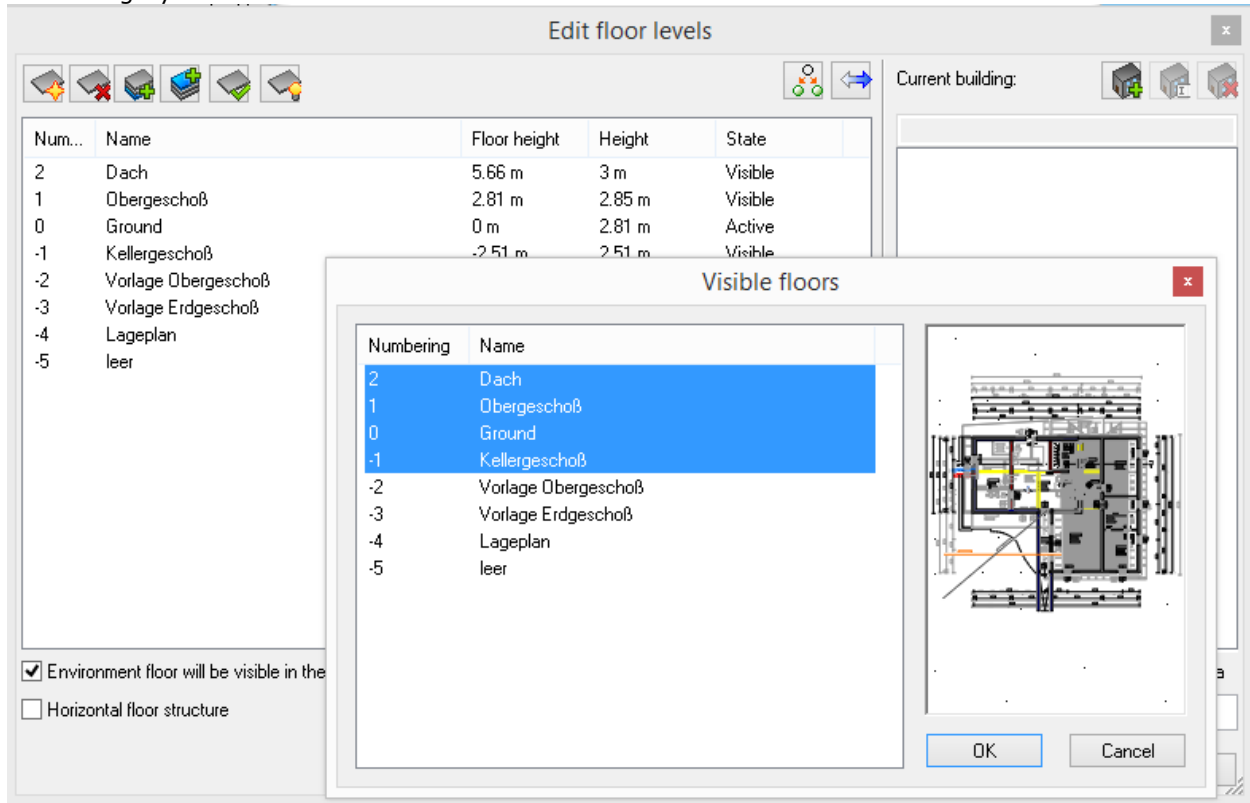
To apply the transparent surfaces on a 3D view, click on transparent surface button in the 3D Model Display dialog and select the category to override its graphic setting.



3. Others improvements

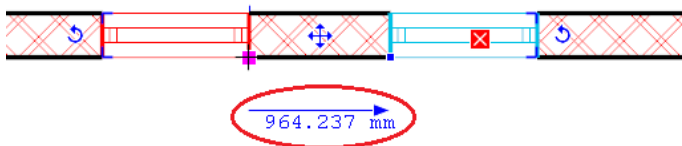
3.1. Multiple visible floor plan structure

The multiple visible floor plan structure control visibility and display on the floor plan. The visible range may contain more than one visible horizontal planes of a multi-story building. You can refer to the elements on a visible floor during the work. Visible floors are displayed with a common grey colour.



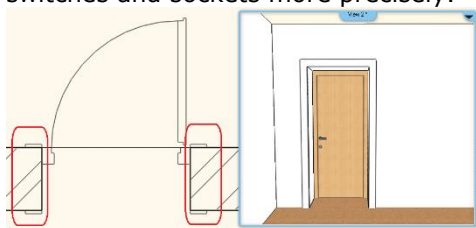
3.2. Smart distance between openings.

The smart distance tool extended with new feature to measure distance between openings. It make possible to shift a door/window relative to the other door/window.



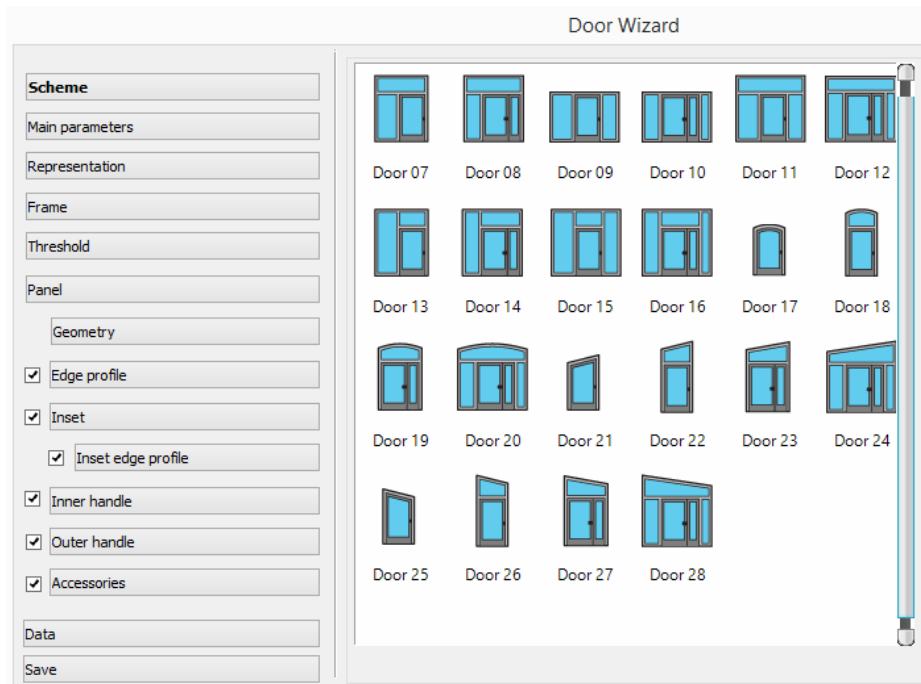
3.3. New option for door lining and architrave

You can display the lining and architrave section on the floorplan. It makes easier to place elements like switches and sockets more precisely.



3.4. New schemas in Door/Window wizard,

New User defined schemas in the Door / Window wizard: Slanted large panel with glass set atop.



3.5. Connected height for wall slab, column, beam

The wall, slab, column, beam default heights or elevations are absolute values and it may be called as unconnected Height. This value you can type as the height of the wall or elevation of slab.

The 2015 version enhanced the wall, column, beam height and slab elevation property and it can refer to the Floor Level height called as Connected Height.

3.6. Import drawing from another project

New command to import a drawing from another project into the current project. This command is especially useful to adopt architectural details from another project.

3.7. New KMZ import

ARCHLine.XP 2015 is able to import 3D objects saved in KMZ file format, e.g. from 3D Warehouse. A KMZ file is only available for download if the model is geo-referenced, that is, it has Longitude and Latitude data.

3.8. Updated SketchUp format

The SKP import/export is extended with the new SketchUp 2015 file format. ARCHLine.XP 2015 is compatible with SketchUp 2015 files so you can import and export the 3D model between ARCHLine.XP 2015 and SketchUp 2015.

It is possible create multiple bubbles assigned to openings.